

DRAWING LOCATION Z:\PROJECTS\DOT\PP\Jewel Lake Road\Civ11 3d\Production Drawings\67310_M1_RETAINING_WALL_VINMAP.dwg
 DATE TIME 1/31/2018 8:23 AM
 LAYOUT MI
 SCALE IN'S
 XREFS
 DESIGNED BY LAJ/JP/BL
 CHECKED BY LAJ/JP/BL
 DRAFTED BY TSMH/BSS/DHF

REVISIONS			STATE	PROJECT DESIGNATION	YEAR	SHEET NO.	TOTAL SHEETS
NO.	DATE	DESCRIPTION					
			ALASKA	0515005/2573100000	2018	M1	M6

501(11)

CAST-IN-PLACE CONCRETE RETAINING WALL							
SHEET	BEGIN STATION	END STATION	OFFSET	LENGTH (LF)	VOLUME (CY)	EXCAVATION AND BACKFILL SUBSIDIARY TO 501(11) (CY)	REMARKS
M5 (F1-F2)	26+31	29+55	RT	324	173	680	RETAINING WALL 1
M6 (F5-F6)	41+44	41+86	RT	42	5	24	RETAINING WALL 2
			TOTAL	366	178	704	

NOTES:

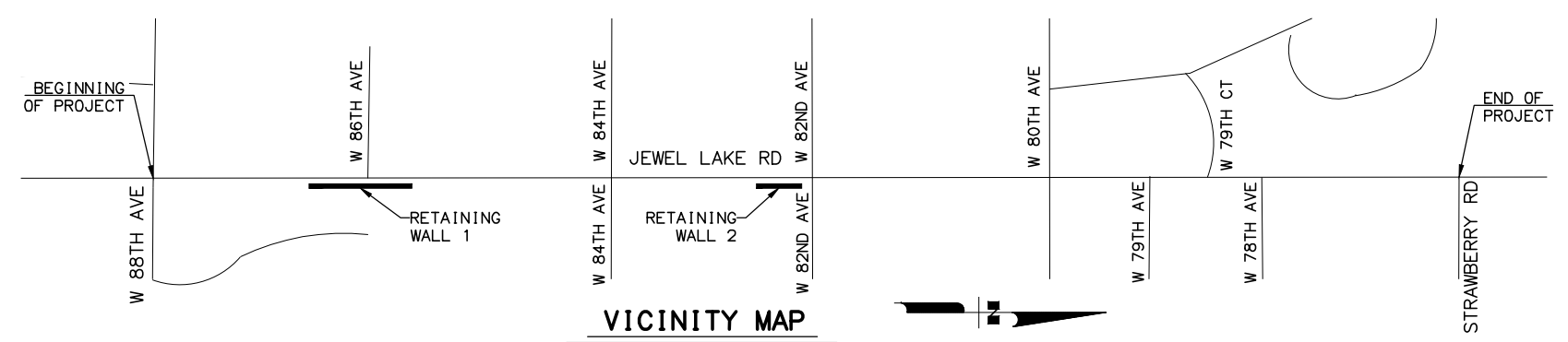
- SEE SHEETS M5 & M6 FOR RETAINING WALL 1 & 2 PLAN & PROFILE.
- ALL CAST IN PLACE CONCRETE SHALL BE CLASS "A" AND ALL REINFORCING STEEL BARS SHALL BE ASTM A615 GRADE 60.
- ALL REINFORCING STEEL AND WELDED WIRE FABRIC SHALL BE SUBSIDIARY TO RETAINING WALL.
- PRIOR TO CONSTRUCTING THE WALL FOOTING, THE SOIL ON WHICH THE WALL FOOTING IS TO BE PLACED SHALL BE THOROUGHLY CLEANED OF ALL LOOSE SOIL, ROCK, AND DELETERIOUS MATERIAL IN ORDER TO PRODUCE A CLEAN AND SOUND BASE TO SET THE STRUCTURE ON.
- PRIOR TO CONSTRUCTION OF EACH WALL, ALL OVERHEAD, SURFACE, AND UNDERGROUND UTILITIES SHALL BE LOCATED AND VERIFIED BY THE CONTRACTOR SO THAT THE UTILITIES DO NOT INTERFERE WITH THE WALL CONSTRUCTION.

514(2)

ANTI-GRAFFITI PROTECTION					
SHEET	BEGIN STATION	END STATION	OFFSET	AREA (SF)	REMARKS
M5 (F1-F2)	26+31	29+55	RT	1509	RETAINING WALL 1
M6 (F5-F6)	41+44	41+86	RT	96	RETAINING WALL 2
			TOTAL	1605	

625(1)

PIPE HANDRAIL					
SHEET	BEGIN STATION	END STATION	OFFSET	LENGTH (LF)	REMARKS
M5 (F1-F2)	26+31	29+55	RT	324	RETAINING WALL 1
			TOTAL	324	



PLANS DEVELOPED BY: KINNEY ENGINEERING, LLC 3909 Arctic Blvd, Suite 400 Anchorage, Alaska 99503 (907) 346-2373 CERT. OF AUTH. NO. AECL 1102	PLANS PREPARED BY KINNEY ENGINEERING, LLC	STATE OF ALASKA DEPARTMENT OF TRANSPORTATION AND PUBLIC FACILITIES HSIP: JEWEL LAKE ROAD WIDENING, 88TH AVENUE TO STRAWBERRY ROAD RETAINING WALL VICINITY MAP, NOTES, AND SUMMARIES
--	--	---

DESIGNED BY: LAJ/JP/BL
 CHECKED BY: LAJ/JP/BL
 DRAFTED BY: TSM/BSB/DHF

XREFS

SCALE: 1" = 12"

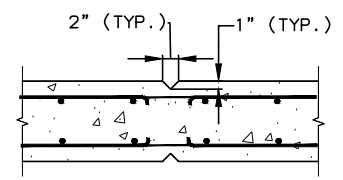
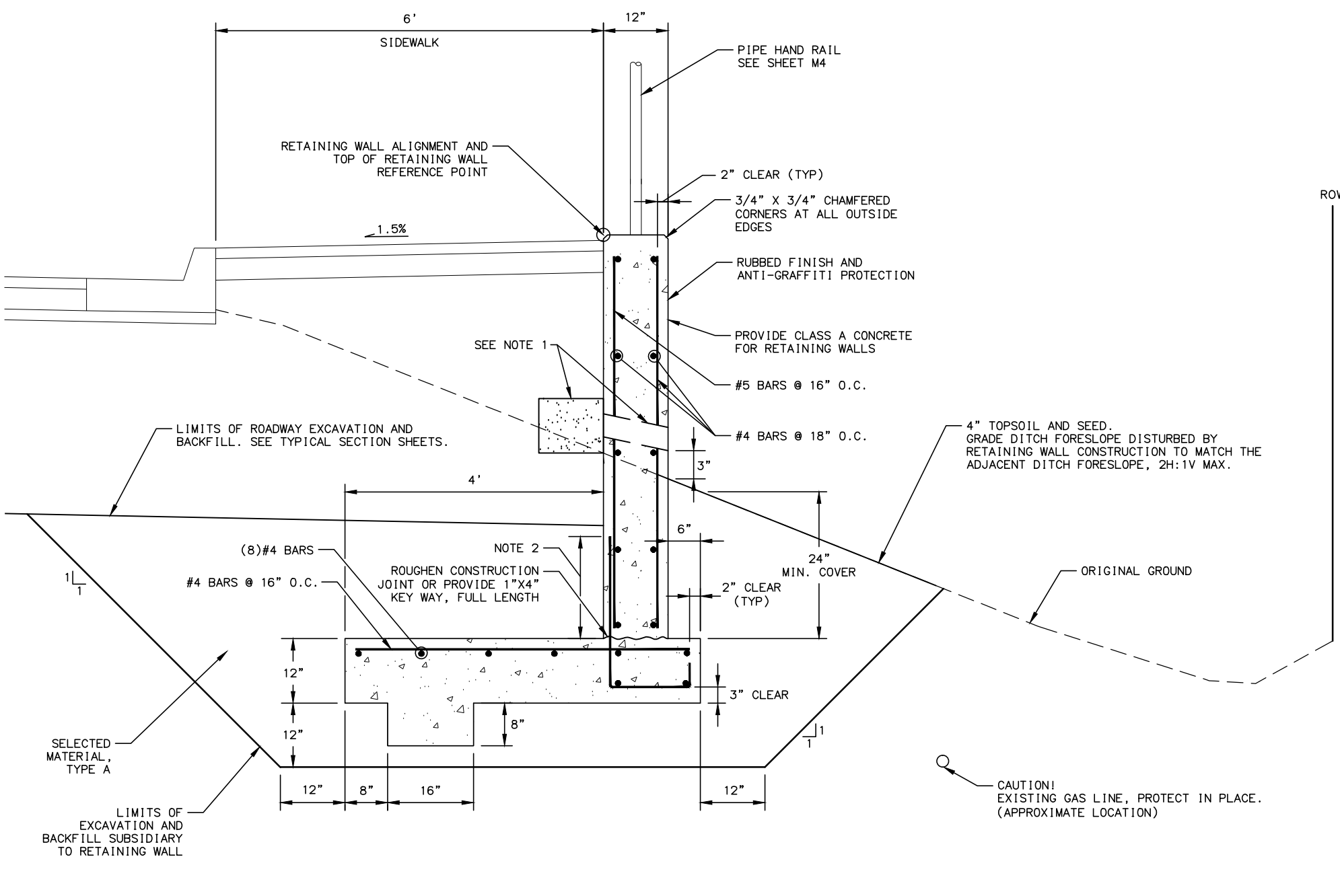
LAYOUT: M2

DATE: 12/18/2017 4:29 PM

DATE TIME: 12/18/2017 4:29 PM

DRAWING LOCATION: Z:\PROJECTS\DOT\PP\level1 Lake Road\Civ11 3d\Production Drawings\67310_M2-M4_RTNG_WALL_DTLS.dwg

REVISIONS			STATE	PROJECT DESIGNATION	YEAR	SHEET NO.	TOTAL SHEETS
NO.	DATE	DESCRIPTION	ALASKA	0515005/2573100000	2018	M2	M6

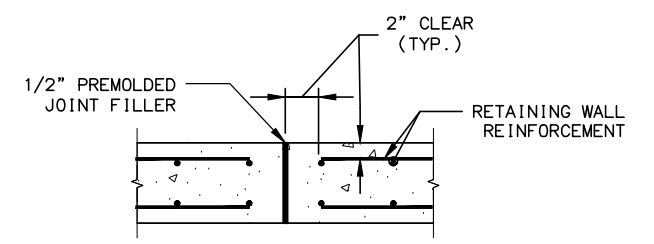


PLAN VIEW

NOTES:

1. HALF OF THE HORIZONTAL REINFORCING SHALL BE STOPPED AT JOINTS.
2. CONTROL JOINTS MAY BE CAST WITH THE FORMWORK OR SHALL BE CUT WITHIN 6 HOURS OF POURING CONCRETE.
3. CONTROL JOINTS SHALL BE PLACED AT A MAXIMUM SPACING OF 20'.

RETAINING WALL CONTROL JOINT DETAIL

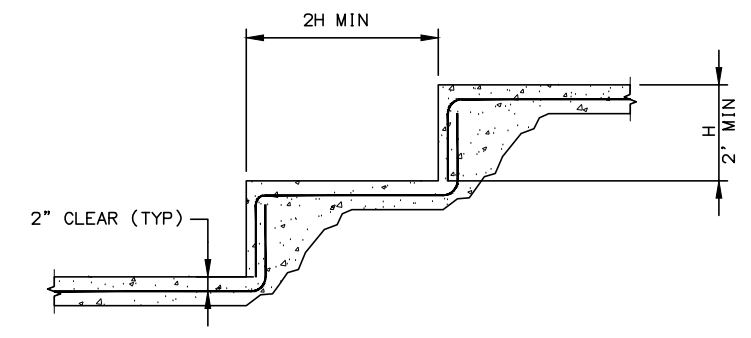


PLAN VIEW

NOTES:

1. PLACE CONSTRUCTION JOINTS SHALL BE PLACED AT A MAXIMUM SPACING OF 40'.

RETAINING WALL CONSTRUCTION JOINT DETAIL



PROFILE VIEW

NOTES:

1. SEE SHEET M5 FOR APPROXIMATE STEP LOCATIONS.
2. FINAL STEP LOCATION TO BE DETERMINED BY CONTRACTOR.

TYPICAL STEPPED FOOTING

NOTES:

1. WEEP HOLE CONSTRUCTION.
 - A. PLACE WEEP HOLE DRAIN TUBES AT 10' O.C.; FORM WITH 3" DIAMETER GALVANIZED OR PVC TUBE, CAST IN PLACE.
 - B. COVER WEEP HOLE WITH 6" SQUARE ALUMINUM OR GALVANIZED STEEL WIRE #4 MESH HARDWARE CLOTH (MIN. WIRE DIAMETER 0.03"). ANCHOR FIRMLY TO BACK FACE OF WALL.
 - C. PLACE ONE CUBIC FOOT OF POROUS BACKFILL MATERIAL IN A BURLAP SACK (SECURELY TIED) OR APPROVED FILTER FABRIC AROUND WEEP HOLE AS SHOWN.
2. LAP BARS 20" MINIMUM.

RETAINING WALL 1

STA. 26+31 TO STA. 29+55 RT

PLANS DEVELOPED BY:
 KINNEY ENGINEERING, LLC
 3909 Arctic Blvd, Suite 400
 Anchorage, Alaska 99503
 (907) 346-2373
 CERT. OF AUTH. NO. AECL 1102

PLANS PREPARED BY

KINNEY ENGINEERING, LLC

STATE OF ALASKA
 DEPARTMENT OF TRANSPORTATION
 AND PUBLIC FACILITIES

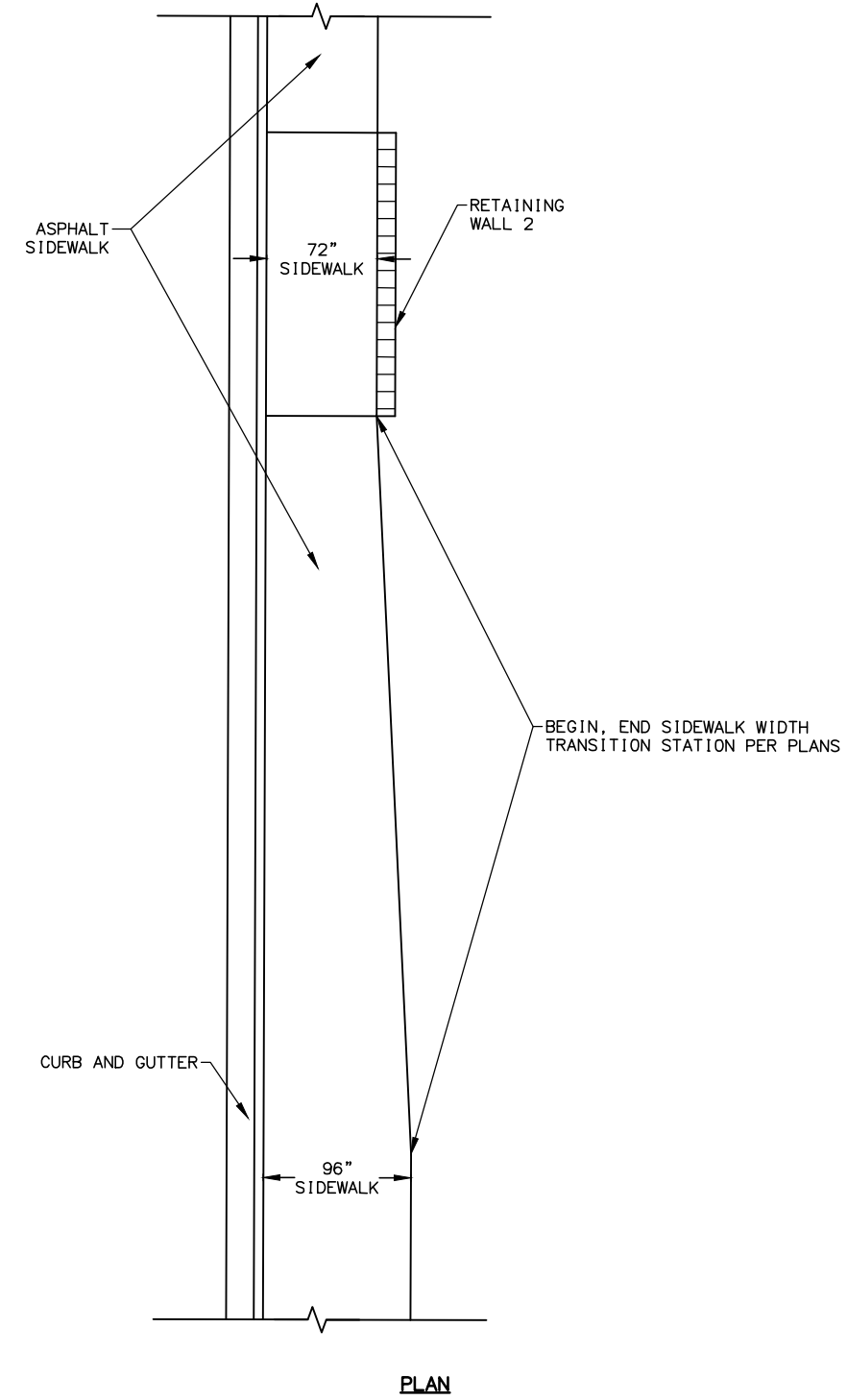
HSIP: JEWEL LAKE ROAD
 WIDENING, 88TH AVENUE
 TO STRAWBERRY ROAD

RETAINING WALL
 DETAILS

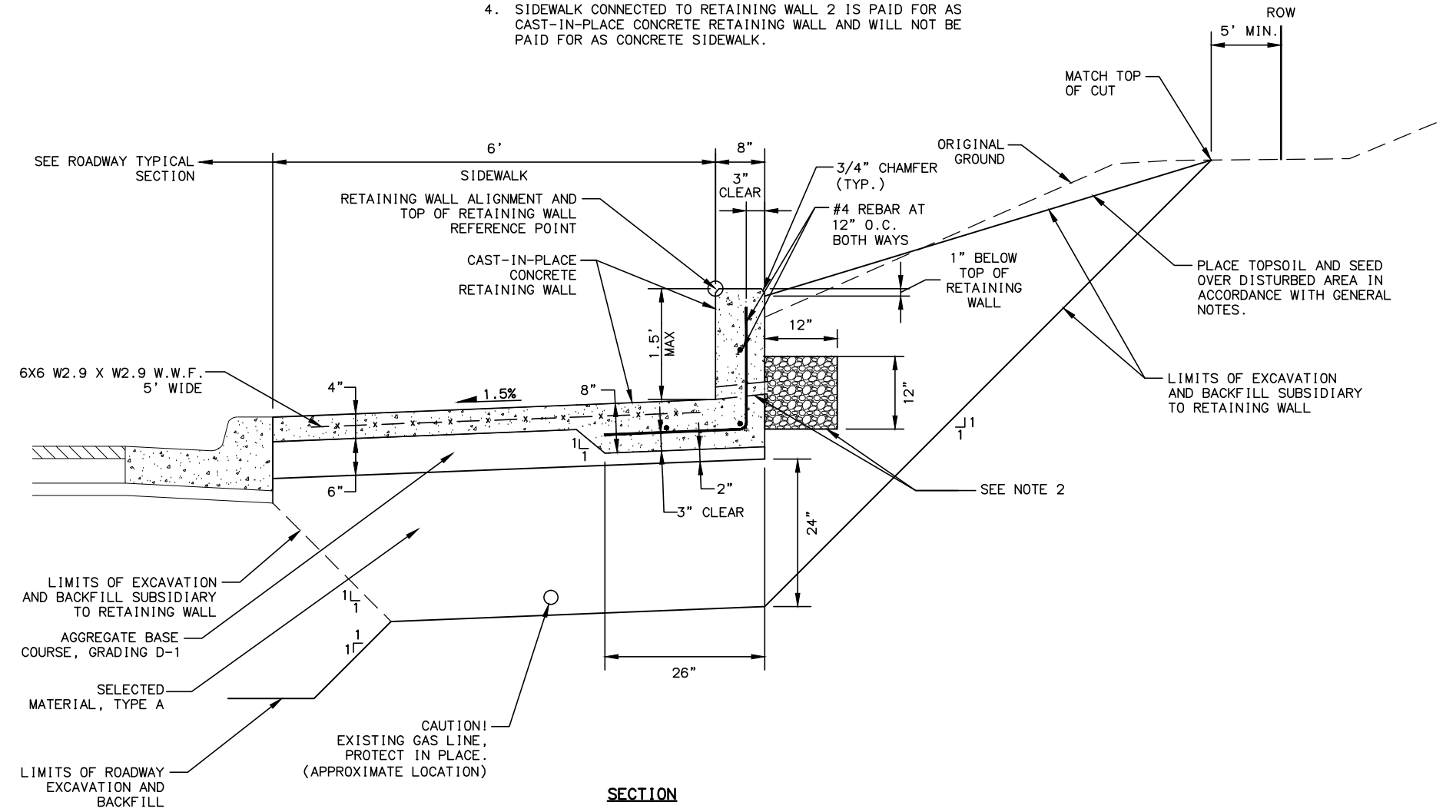
REVISIONS			STATE	PROJECT DESIGNATION	YEAR	SHEET NO.	TOTAL SHEETS
NO.	DATE	DESCRIPTION					
			ALASKA	0515005/2573100000	2018	M3	M6

NOTES:

1. SEE SHEET M2 FOR RETAINING WALL CONTROL AND CONSTRUCTION JOINT DETAILS.
2. INSTALL DRAIN TUBES AT 10' O.C.; FORM WITH 2" GALV. OR PVC TUBE, CAST IN PLACE. SUBSIDIARY TO CLASS A CONCRETE FOR RETAINING WALL. REFER TO STD. DWG B-05.00 FOR OTHER DRAINAGE DETAILS.
3. PROVIDE A RUBBED FINISH AND ANTI-GRAFFITI PROTECTION TO VERTICAL PORTION OF THE RETAINING WALL FACING TRAFFIC. PROVIDE A COURSE BROOM FINISH PERPENDICULAR TO PEDESTRIAN TRAFFIC ON WALKING SURFACE.
4. SIDEWALK CONNECTED TO RETAINING WALL 2 IS PAID FOR AS CAST-IN-PLACE CONCRETE RETAINING WALL AND WILL NOT BE PAID FOR AS CONCRETE SIDEWALK.



RETAINING WALL SIDEWALK WIDTH TRANSITION



RETAINING WALL 2

STA. 41+44 TO STA. 41+86, RT

DRAWING LOCATION: Z:\PROJECTS\DOT\PP\level\Lake Road\Civ11_3d\Production Drawings\67310_M2-M4_RTNG_WALL_DTLS.dwg
 DATE TIME: 12/18/2017 4:29 PM
 LAYOUT: M3
 SCALE: 1/8" = 1'-0"
 DESIGNED BY: LAJ/JP/BL
 CHECKED BY: LAJ/JP/BL
 DRAFTED BY: TSM/BSS/DHF

PLANS DEVELOPED BY:
 KINNEY ENGINEERING, LLC
 3909 Arctic Blvd, Suite 400
 Anchorage, Alaska 99503
 (907) 346-2373
 CERT. OF AUTH. NO. AECL 1102

PLANS PREPARED BY

KINNEY ENGINEERING, LLC

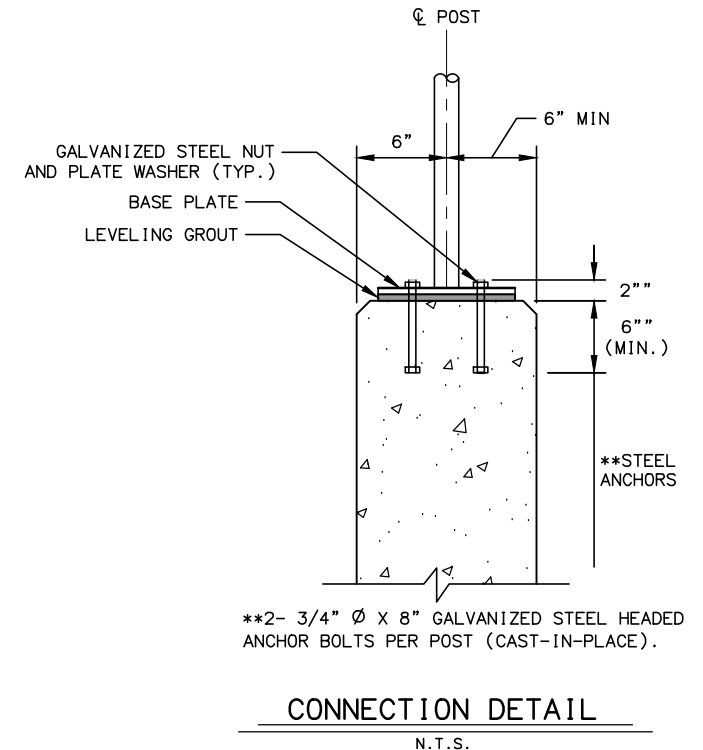
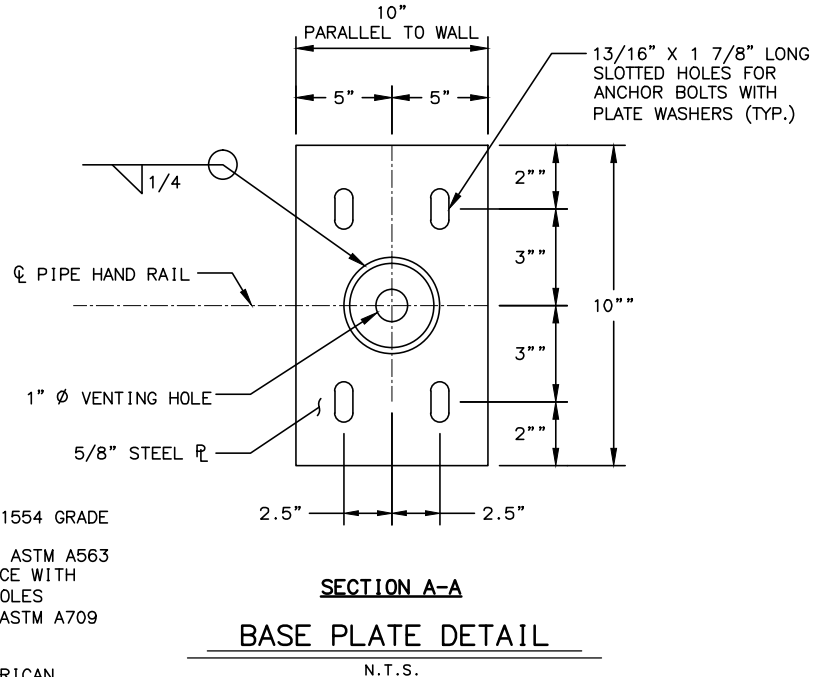
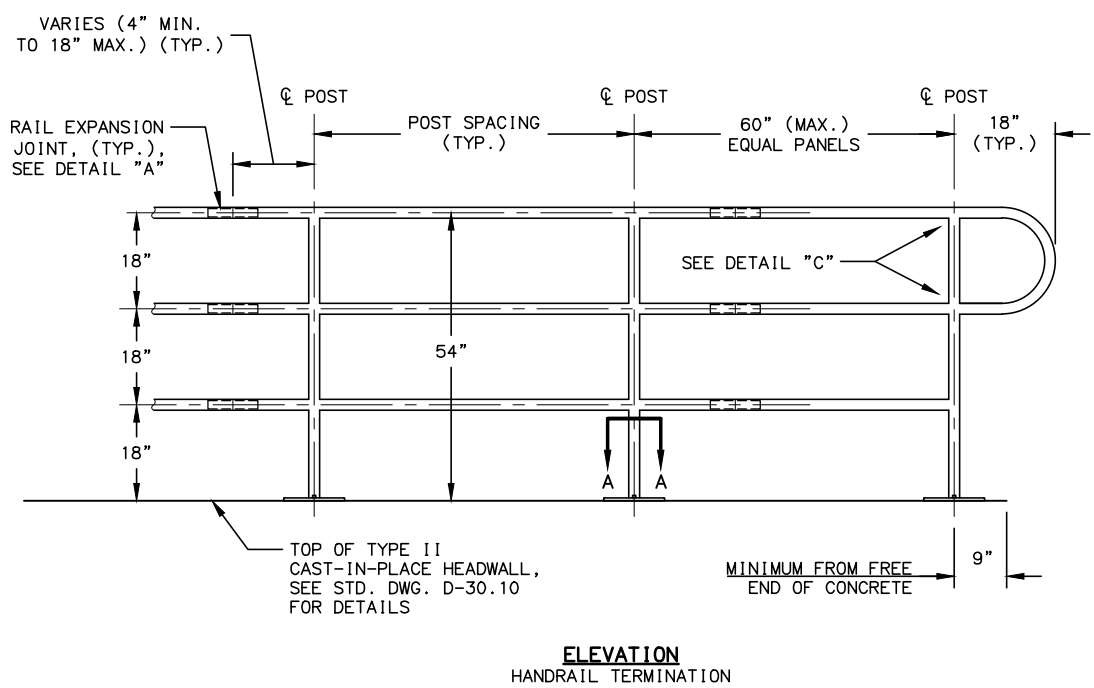
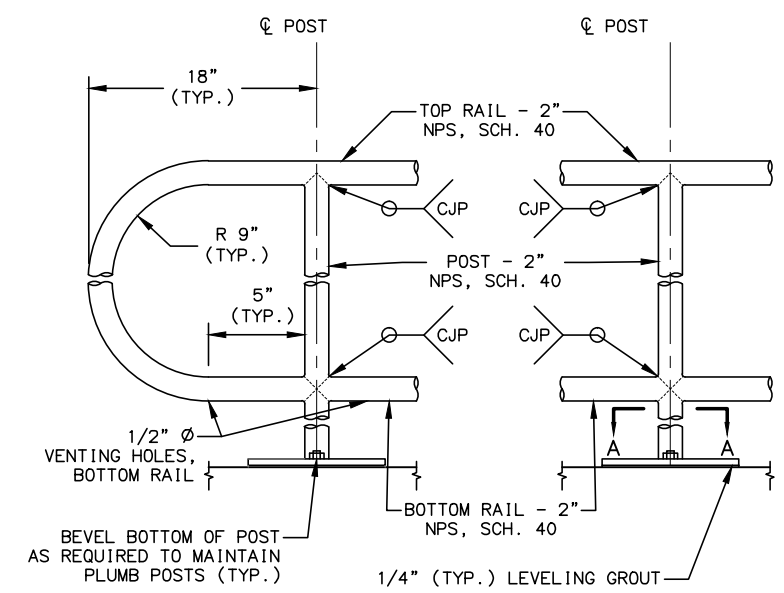
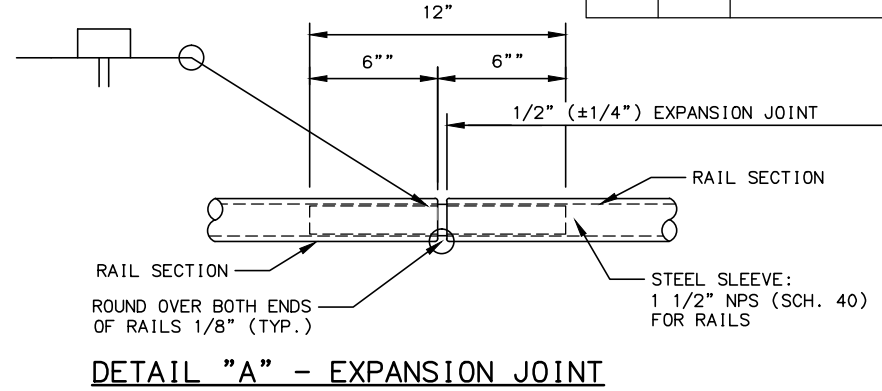
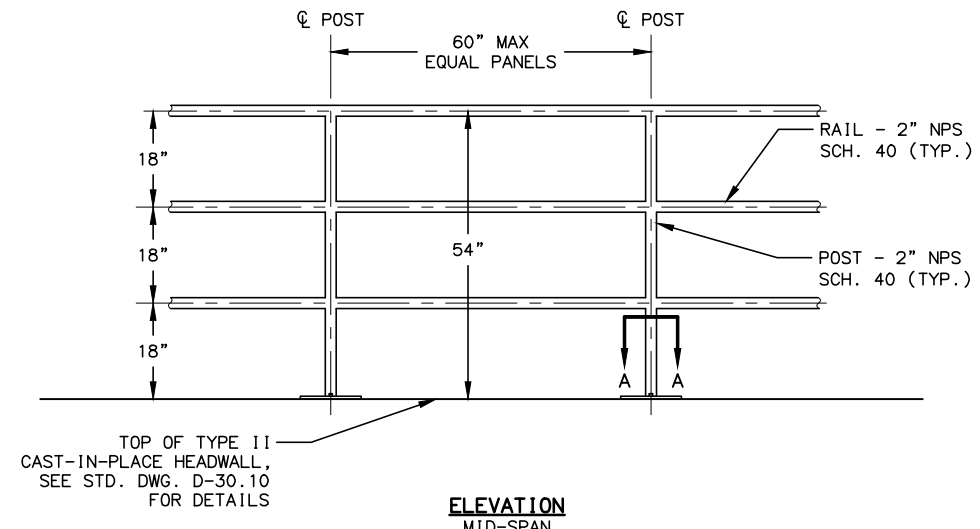
STATE OF ALASKA
 DEPARTMENT OF TRANSPORTATION
 AND PUBLIC FACILITIES

**HSIP: JEWEL LAKE ROAD
 WIDENING, 88TH AVENUE
 TO STRAWBERRY ROAD**

**RETAINING WALL
 DETAILS**

DRAWING LOCATION Z:\PROJECTS\DOT\PP\level\Lake Road\Civ11\3d\Production Drawings\67310_M2-M4_RTNG_WALL_DTLS.dwg
 DATE TIME 12/18/2017 4:29 PM
 LAYOUT M4
 SCALE IN'S
 XREFS
 DESIGNED BY LAJ/JP/BL
 CHECKED BY LAJ/JP/BL
 DRAFTED BY TSMY/BSB/DHF

REVISIONS			STATE	PROJECT DESIGNATION	YEAR	SHEET NO.	TOTAL SHEETS
NO.	DATE	DESCRIPTION	ALASKA	0515005/Z573100000	2018	M4	M6



- NOTES:**
- DIMENSIONS ON TYPICAL SECTION AND END SECTION ARE SHOWN TO CENTER OF PIPE.
 - PIPE RAILS AND POSTS SHALL BE IN ACCORDANCE WITH ASTM A53 GRADE B FOR STANDARD WEIGHT PIPE AND ASTM A500 GRADE B, C, OR D. POSTS AND END RAILS SHALL BE FABRICATED AND INSTALLED PLUMB, +/- 1" TOLERANCE WHEN MEASURED FROM THE TOP RAIL TO THE TOP OF FOUNDATION.
 - BASE PLATES SHALL BE IN ACCORDANCE WITH ASTM A36.
 - THE RAILING SHALL BE HOT-DIP GALVANIZED AFTER FABRICATION. ALL NUTS, BOLTS AND WASHERS SHALL BE HOT-DIP GALVANIZED IN ACCORDANCE WITH ASTM A123.
 - ANCHOR BOLTS SHALL BE IN ACCORDANCE WITH ASTM F1554 GRADE 36. SET BOLTS USING A TEMPLATE TO INSURE PROPER ALIGNMENT. ALL NUTS SHALL BE IN ACCORDANCE WITH ASTM A563 OR ASTM A194. FLAT WASHERS SHALL BE IN ACCORDANCE WITH ASTM F436 AND PLATE WASHERS (FOR LONG SLOTTED HOLES ONLY), SHALL BE IN ACCORDANCE WITH ASTM A36 OR ASTM A709 GRADE 36.
 - ALL WELDING SHALL BE IN ACCORDANCE WITH THE AMERICAN WELDING SOCIETY STRUCTURAL WELDING CODE (STEEL) ANSI/AWS D1.1 (CURRENT EDITION). WELD METAL SHALL BE E60XX OR E70XX. NONDESTRUCTIVE TESTING OF WELDS IS NOT REQUIRED.

RAILING MEMBER DIMENSIONS TABLE			
MEMBER	DESIGNATION	OUTSIDE DIMENSION	WALL THICKNESS
POSTS	2" NPS (SCH. 40)	2.375"	0.154"
RAILS	2" NPS (SCH. 40)	2.375"	0.154"
RAIL JOINT/SPLICE SLEEVES	1 1/2" NPS (SCH. 40)	1.900"	0.145"

PLANS DEVELOPED BY: KINNEY ENGINEERING, LLC 3909 Arctic Blvd, Suite 400 Anchorage, Alaska 99503 (907) 346-2373 CERT. OF AUTH. NO. AECL 1102	PLANS PREPARED BY KINNEY ENGINEERING, LLC	STATE OF ALASKA DEPARTMENT OF TRANSPORTATION AND PUBLIC FACILITIES HSIP: JEWEL LAKE ROAD WIDENING, 88TH AVENUE TO STRAWBERRY ROAD PIPE HAND RAIL DETAILS
--	--	---

DESIGNED BY: JMW/BL
 CHECKED BY: JMW/JPB
 DRAFTED BY: JMW/DF

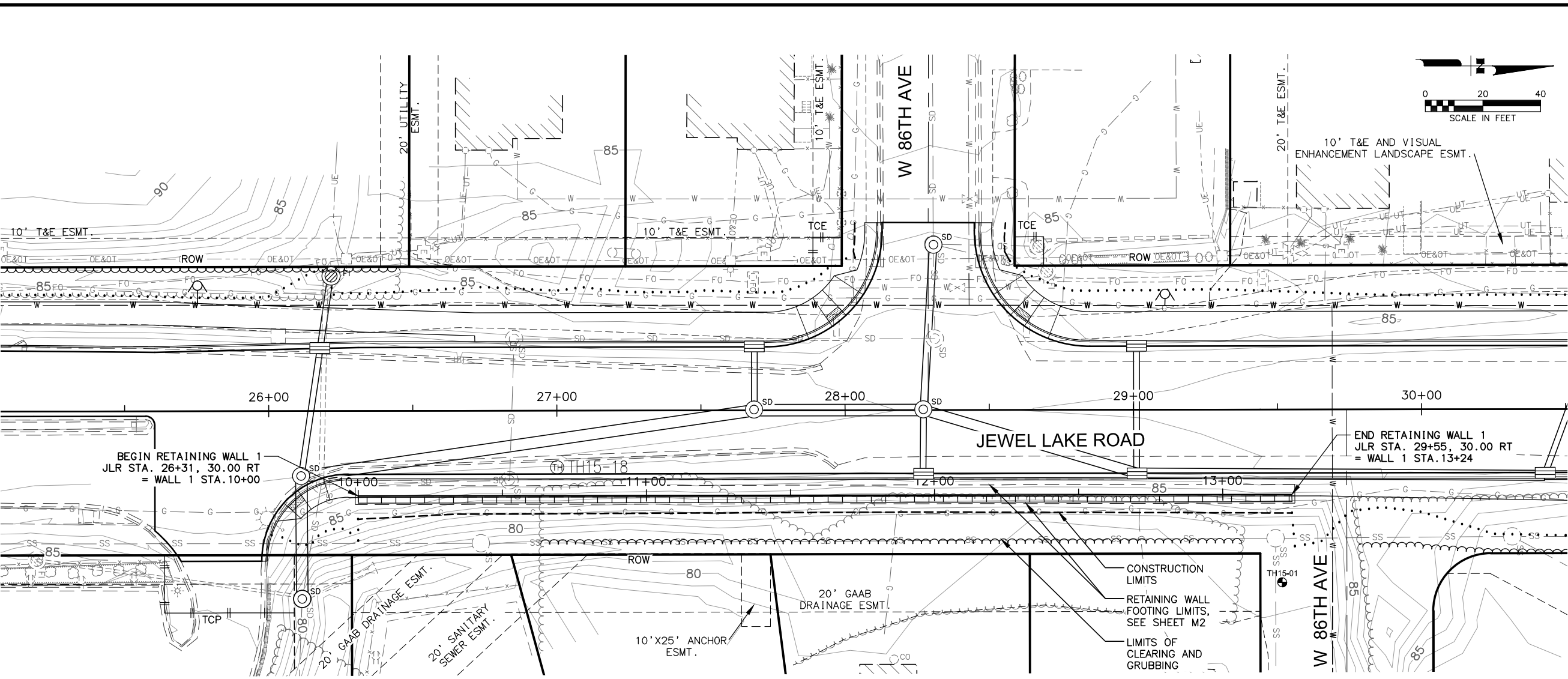
XREFS

SCALE AS SHOWN

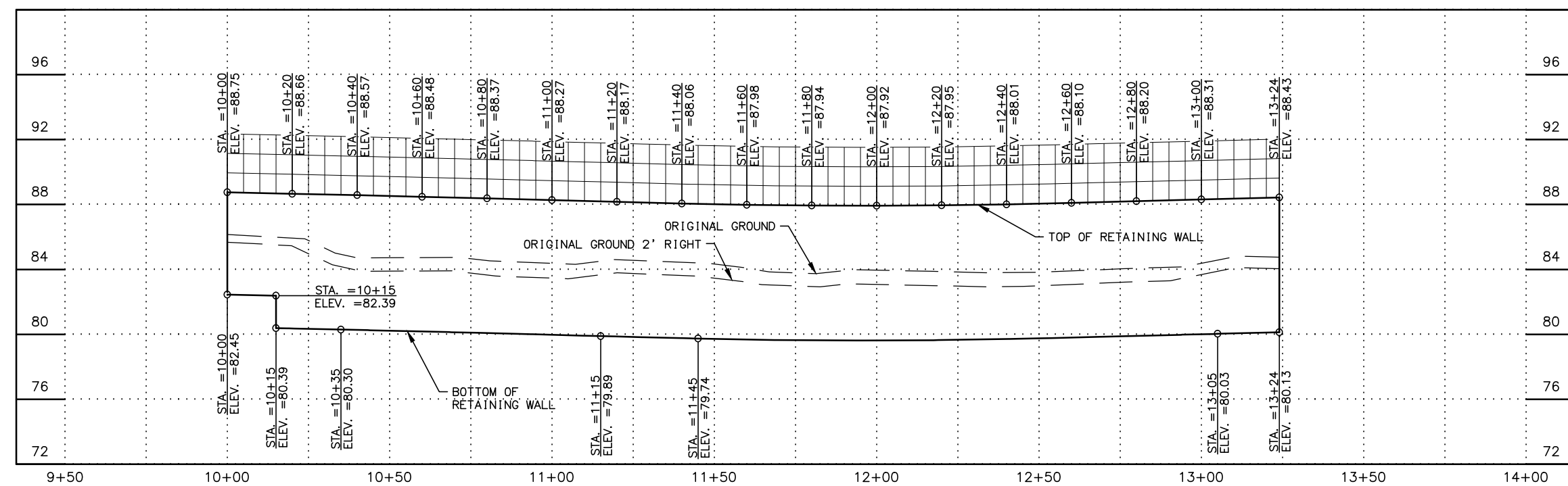
LAYOUT M5

DATE TIME 12/27/2017 2:30 PM

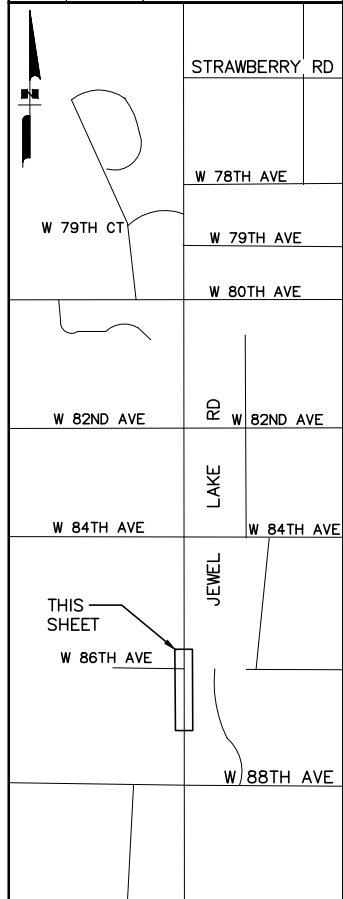
DRAWING LOCATION Z:\PROJECTS\DOT\PP\Jewel Lake Road\Civil\13d\Production Drawings\57310_M5-M6_RTNG_WALL_P&P.dwg



RETAINING WALL 1



SHEET NO.	TOTAL SHEETS	
M5	M6	
STATE	YEAR	
ALASKA	2018	
PROJECT DESIGNATION		
0515005/Z573100000		
ADDENDUM NO.		
ATTACHMENT NO.		
REVISIONS		
NO.	DATE	DESCRIPTION



PLANS DEVELOPED BY:
 KINNEY ENGINEERING, LLC
 3909 Arctic Blvd, Suite 400
 Anchorage, Alaska 99503
 (907) 346-2373
 CERT. OF AUTH. NO. AECL 1102



STATE OF ALASKA
 DEPARTMENT OF TRANSPORTATION
 AND PUBLIC FACILITIES

HSIP: JEWEL LAKE ROAD
 WIDENING, 88TH AVE TO
 STRAWBERRY RD

RETAINING WALL 1
 PLAN & PROFILE

DESIGNED BY: LM/BL
 CHECKED BY: LM/JPB
 DRAFTED BY: LM/DF

XREFS

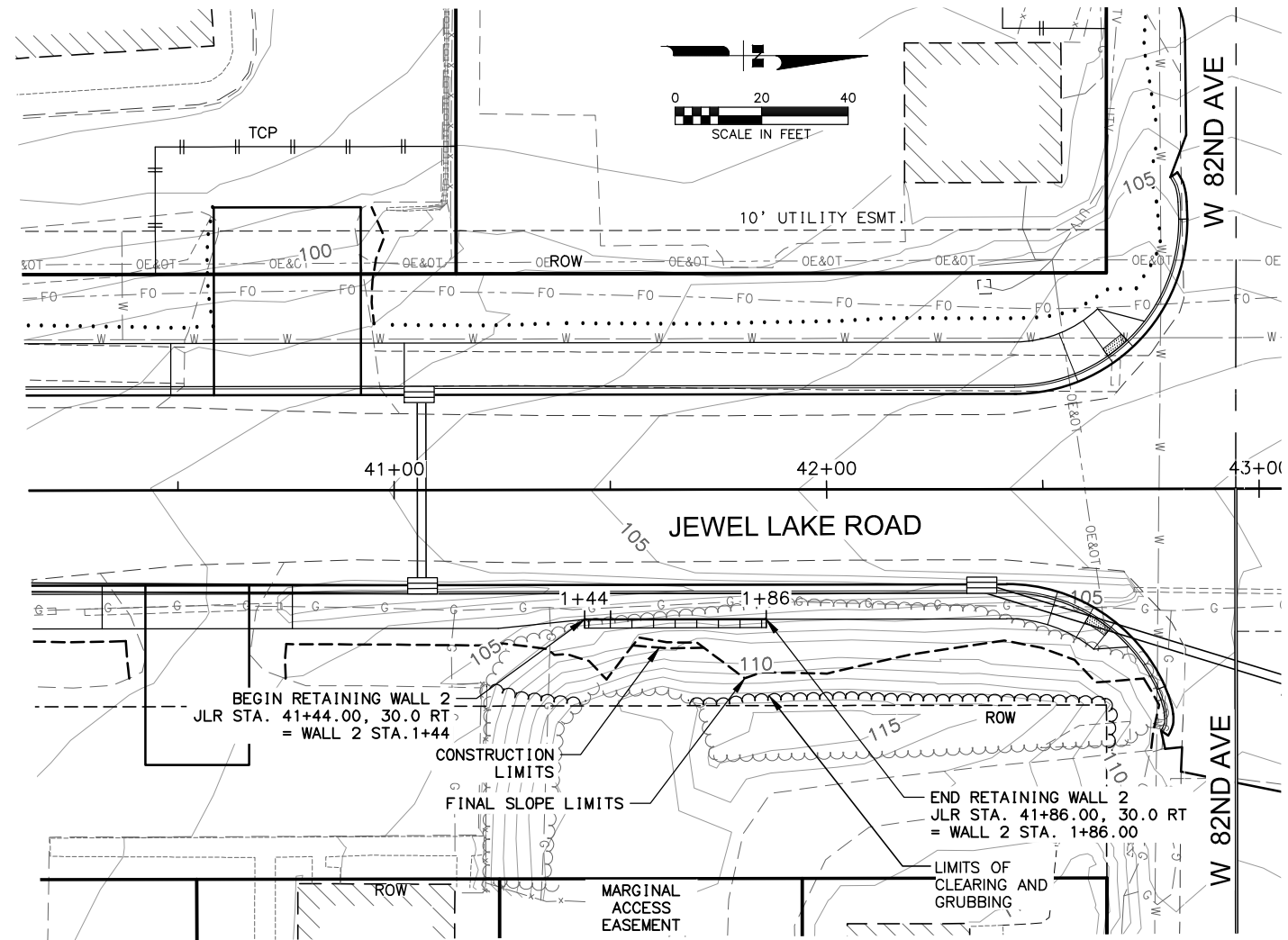
SCALE: AS SHOWN

LAYOUT: M6

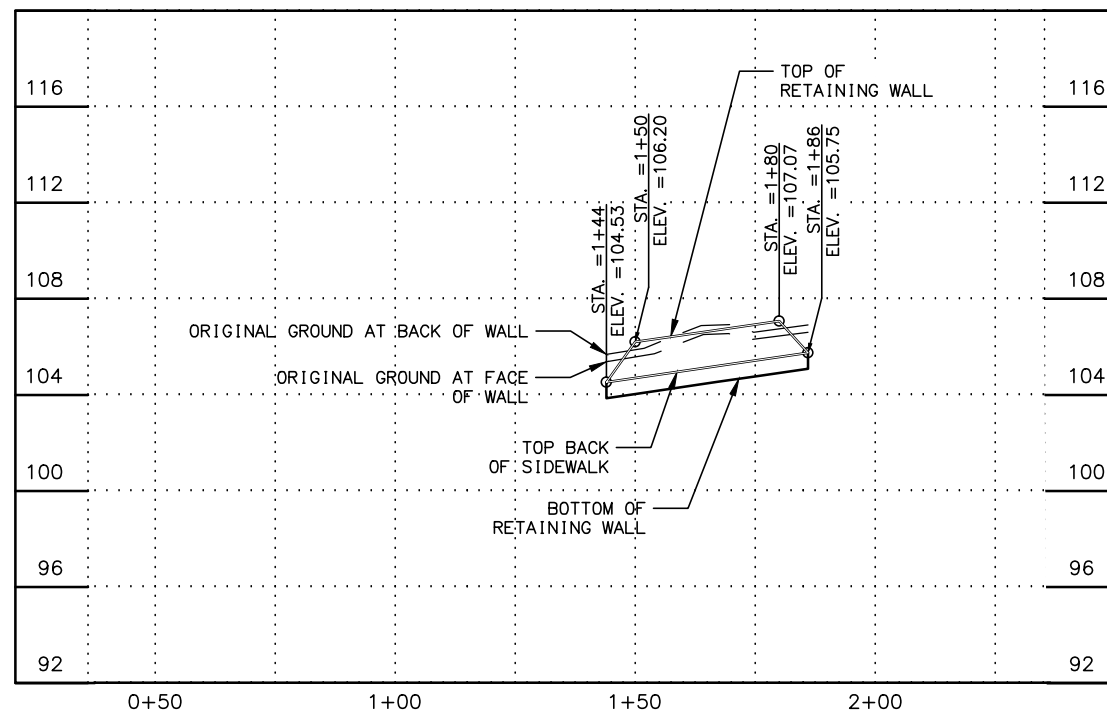
DATE TIME: 12/27/2017 2:30 PM

Z:\PROJECTS\DOTPF\Jewel Lake Road\Civil\3d\Production Drawings\57310_M6-M6_RTINC_WALL_P&P.dwg

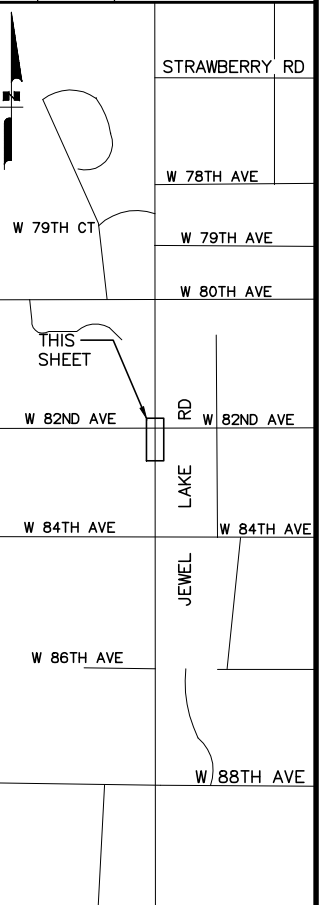
DRAWING LOCATION



RETAINING WALL 2



SHEET NO.	TOTAL SHEETS	
M6	M6	
STATE	YEAR	
ALASKA	2018	
PROJECT DESIGNATION		
0515005/Z573100000		
ADDENDUM NO.		
ATTACHMENT NO.		
REVISIONS		
NO.	DATE	DESCRIPTION



PLANS DEVELOPED BY:
 KINNEY ENGINEERING, LLC
 3909 Arctic Blvd, Suite 400
 Anchorage, Alaska 99503
 (907) 346-2373
 CERT. OF AUTH. NO. AECL 1102



STATE OF ALASKA
 DEPARTMENT OF TRANSPORTATION
 AND PUBLIC FACILITIES
 HSIP: JEWEL LAKE ROAD
 WIDENING, 88TH AVE TO
 STRAWBERRY RD
 RETAINING WALL 2
 PLAN & PROFILE